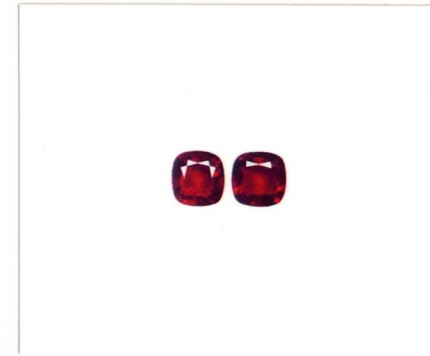


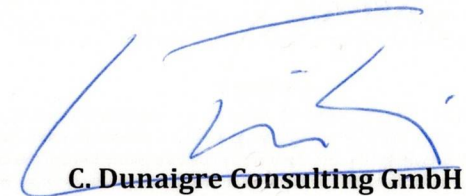
RAPPORT DE PIERRE PRÉCIEUSE · EDELSTEINBERICHT GEMSTONE REPORT

No.	CDC 2208462/1&2
Date	13 August 2022
Object description **	Two faceted gemstones
Weight	1) 1.66 ct 2) 1.70 ct
Dimensions	1) 7.16 x 7.12 x 3.17 mm 2) 7.24 x 6.97 x 3.30 mm
Colour	Vivid red *
Shape/style	Cushion-shape/mixed cut
Transparency	Transparent
Identification	RUBIES (Natural Corundum)
These gemstones show gemological properties consistent with those of rubies from:	Mozambique
Comments	Indications of heating.

* This colour segment is also referred to as **"Pigeon blood"** in the trade.

** These two rubies form a **well matching pair**.




C. Dunaigre Consulting GmbH
Christian Dunaigre AG, DUG

IDENTIFICATION · IDENTIFIKATION · IDENTIFICATION

This Gemstone Identification Report is a professional and independent opinion based on the gemmological properties of the gemstone at the time of the examination. The reverse side is an integral part of the Report and contains important information and limitations.